

Generic Input			
Valve Brand	J Flow	Valve Brand Truncate	JF
Series	2500 Series w/ 300# Flange	Series Truncate	2500 300#
Input: 1 = mm / 2 = in	1		
Safety Factor	25%		

Actuator Design Year

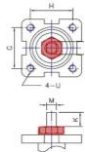
16

Valve Input

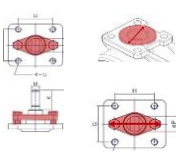
Valve Torque		Direct Mount Check	Section Only For Non Direct Mount ("D.M"), Otherwise Leave Blank							Valve Dimension						
			Bracket Check		Extended Shaft Check		Buyer Preference	Valve Info	Valve Flange	Valve Dimension	Valve Stem Shape and Dimension					
			Possible obstruction for std. Easytork bracket?	Out. dia. of obstruction over flange surface	Are bolts for packing gland close to valve stem height?	If bolts interfere with valve stem, what is inside dia. between bolts?	If w/ bracket: How much valve stem capture?	If known, capturable valve stem height?	In ISO (i.e. F05) or in	Flange to top of valve stem	Stem Shape 1 = Square 2 = Double D 3 = Bore + Key	Valve stem dimension in in or mm Choose either in / mm	V Sq - sq DD - bore b+k - bore	V1 Sq - sq DD - flat b+k - key	V2 b+k - key (leave blank if Sq or DD)	Insert orientation when valve is CLOSED. If Sq 1=diamond / 2=square If DD or B+K 1=in line / 2=not in line 1 = Diamond or in line / 2=Square or not in line
Published valve torque	Incl. safety factor	Any obstruction over flange?	1=Yes / 0=No	in/mm	1=Yes / 0=No	in/mm	in/mm	in/mm	in/mm	in/mm	in/mm	in/mm	in/mm	in/mm	in/mm	
Valve Size	in-lb	in-lb														
1/2"	105	131	No							42	NA	2	mm	10.00	6.50	
3/4"	125	156	No							42	NA	2	mm	10.00	6.50	
1"	170	213	No							50	NA	2	mm	14.00	9.70	
1 1/2"	390	488	No							70	NA	2	mm	18.00	9.70	
2"	540	675	No							70	NA	2	mm	18.00	9.70	
2 1/2"	1,265	1,581	No							102	NA	2	mm	20.00	12.00	
3"	1,575	1,969	No							102	NA	2	mm	20.00	12.00	
4"	2,910	3,638	No							102	NA	2	mm	24.00	15.00	
		0														
		0														
		0														
		0														
		0														
		0														
		0														
		0														
		0														

Notes:

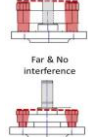
ie. Gland, capi, etc...



If not known, leave blank



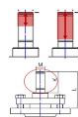
Close & Interferes



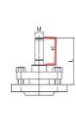
Far & No interference



If not known, leave blank



If not known, leave blank



If not known, leave blank



If info not available, then NA



If not known, leave blank



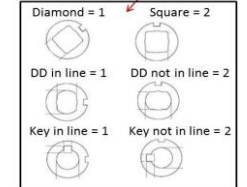
If info not available, then NA



If info not available, then NA



When Valve Is CLOSED Is valve stem: Butterfly valve as example in pipeline



Disclaimer: Based on information available from valve manufacturer. All dimensions to be verified by customer prior to purchase confirmation.

Individual Part Order Code*

(If ordered with the below order codes, Easytork will ship each part as standalone)

Actuator Torque

2017 List Price

Complete Actuator to Valve Order Code*

Valve Size	Required Actuator Range	Actuator Torque				Individual Part Order Code*				2017 List Price					Complete Actuator to Valve Order Code*
		DA @ 60PSI	DA @ 80PSI	FS @ 60PSI	FS @ 80PSI	Actuator	Insert	Extended Shaft	Bracket	Actuator +	Insert +	Extended Shaft +	Bracket or Plate +	= Total Package: Actuator and hardware for mounting to valve	
1/2"	EVA-0309	146	195	95	127	C-A-1-11-1-111	D-112-10.00x6.50mm	Addtl. Data Req.	#VALUE!						JF.2500 300#.1/2".0309.16
	EVA-0411	288	384	187	250	C-A-2-11-1-111	D-212-10.00x6.50mm	Addtl. Data Req.	#VALUE!						JF.2500 300#.1/2".0411.16
3/4"	EVA-0309	146	195	95	127	C-A-1-11-1-111	D-112-10.00x6.50mm	Addtl. Data Req.	#VALUE!						JF.2500 300#.3/4".0309.16
	EVA-0411	288	384	187	250	C-A-2-11-1-111	D-212-10.00x6.50mm	Addtl. Data Req.	#VALUE!						JF.2500 300#.3/4".0411.16
1"	EVA-0411	288	384	187	250	C-A-2-11-1-111	D-212-14.00x9.70mm	Addtl. Data Req.	#VALUE!						JF.2500 300#.1".0411.16
	EVA-0514	572	763	372	496	C-A-3-11-1-111	D-312-14.00x9.70mm	Addtl. Data Req.	#VALUE!						JF.2500 300#.1".0514.16
1 1/2"	EVA-0514	572	763	372	496	C-A-3-11-1-111	D-312-18.00x9.70mm	Addtl. Data Req.	#VALUE!						JF.2500 300#.1 1/2".0514.16
	EVA-0717	1,144	1,526	744	992	C-A-4-11-1-111	D-412-18.00x9.70mm	Addtl. Data Req.	#VALUE!						JF.2500 300#.1 1/2".0717.16
2"	EVA-0514	572	763	372	496	C-A-3-11-1-111	D-312-18.00x9.70mm	Addtl. Data Req.	#VALUE!						JF.2500 300#.2".0514.16
	EVA-0717	1,144	1,526	744	992	C-A-4-11-1-111	D-412-18.00x9.70mm	Addtl. Data Req.	#VALUE!						JF.2500 300#.2".0717.16
2 1/2"	EVA-1022	2,289	3,051	1,488	1,983	C-A-5-11-1-111	D-512-20.00x12.00mm	Addtl. Data Req.	#VALUE!						JF.2500 300#.2 1/2".1022.16
	EVA-1227	4,577	6,103	2,975	3,967	C-A-6-11-1-111	D-612-20.00x12.00mm	Addtl. Data Req.	#VALUE!						JF.2500 300#.2 1/2".1227.16
3"	EVA-1022	2,289	3,051	1,488	1,983	C-A-5-11-1-111	D-512-20.00x12.00mm	Addtl. Data Req.	#VALUE!						JF.2500 300#.3".1022.16
	EVA-1227	4,577	6,103	2,975	3,967	C-A-6-11-1-111	D-612-20.00x12.00mm	Addtl. Data Req.	#VALUE!						JF.2500 300#.3".1227.16
4"	EVA-1227	4,577	6,103	2,975	3,967	C-A-6-11-1-111	D-612-24.00x15.00mm	Addtl. Data Req.	#VALUE!						JF.2500 300#.4".1227.16
	EVA-1436	9,154	12,205	5,950	7,933	C-A-7-11-1-111	D-712-24.00x15.00mm	Addtl. Data Req.	#VALUE!						JF.2500 300#.4".1436.16

Easytork will ship the actuator, insert, extended shaft, and bracket unassembled in one SKU box.

Refer to Assembly & Labor tab if buyer wants Easytork to assemble items together.

Disclaimer: Based on information available from valve manufacturer. All dimensions to be verified by customer prior to purchase confirmation.

Note*: Only for actuator and hardware required for mounting to valve. Order auxiliary add-ons (e.g., solenoid valve, lockout & PST, limit switch, chemical resistant adder, etc.) separately. If buyer requires assembly of auxiliary add-ons and/or valve, labor will be charged separately.