

Generic Input		Easytork internal use only	
Valve Brand	Titan Flow Control	Valve Brand Truncate	TI
Series	BF 75 & BF 76	Series Truncate	BF7576
Input: 1 = mm / 2 = in	2		
Safety Factor	25%		

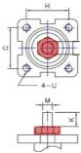
Actuator Design Year 16

Valve Input

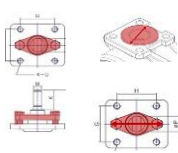
Valve Torque				Section Only For Non Direct Mount ("D.M"), Otherwise Leave Blank						Valve Dimension							
Direct Mount Check				Bracket Check		Extended Shaft Check		Buyer Preference		Valve Info		Valve Flange		Valve Dimension		Valve Stem Shape and Dimension	
Published valve torque	Incl. safety factor	Any obstruction over flange?	1=Yes / 0=No	Possible obstruction for std. Easytork bracket?	Out. dia. of obstruction over flange surface	Are bolts for packing gland close to valve stem height?	If bolts interfere with valve stem, what is inside dia. between bolts?	If w/ bracket: How much valve stem capture?	If known, capturable valve stem height	In ISO (i.e. F05)	Flange to top of valve stem	Stem Shape	Valve stem dimension in or mm	V	V1	V2	Insert orientation when valve is CLOSED. If Sq 1=diamond / 2=square If DD or B+K 1=in line / 2=not in line
in-lb	in-lb			1=Yes / 0=No	in/mm	1=Yes / 0=No	in/mm	in/mm	in/mm	in/mm	in/mm	1 = Square 2 = Double D 3 = Bore + Key	Choose either in / mm	Sq - sq DD - bore b+k - bore	Sq - sq DD - flat b+k - key	b+k - key (leave blank if Sq or DD)	1 = Diamond or in line / 2=Square or not in line
2"	105	131	No							2.76	1.26	2	in	0.500	0.370		
2 1/2"	163	204	No							2.76	1.26	2	in	0.500	0.370		
3"	219	274	No							2.76	1.26	2	in	0.500	0.370		
4"	322	403	No							2.76	1.26	2	in	0.630	0.440		
5"	481	601	No							2.76	1.26	2	in	0.750	0.500		
6"	690	863	No							2.76	1.26	2	in	0.750	0.500		
8"	1,182	1,478	No							4.02	1.75	2	in	0.870	0.630		
10"	1,872	2,340	No							4.92	1.50	3	in	1.130	0.315	0.315	
12"	2,794	3,493	No							4.92	1.87	3	in	1.250	0.315	0.315	
14"	3,069	3,836	No							4.92	1.77	3	in	1.250	0.315	0.315	
16"	4,879	6,099	No							6.5	1.77	3	in	1.310	0.394	0.394	
18"	7,243	9,054	No							6.5	2.01	3	in	1.500	0.394	0.394	
20"	9,180	11,475	No							6.5	2.52	3	in	1.630	0.394	0.394	
		0															
		0															
		0															
		0															
		0															

Notes:

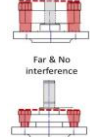
ie. Gland, capi, etc...



If not known, leave blank



Close & Interferes



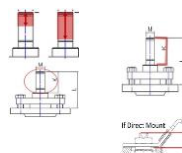
Far & No interference



If not known, leave blank



If not known, leave blank



If Direct Mount

If not known, leave blank



If info not available, then NA



If Direct Mount

If not known, leave blank



If info not available, then NA



If info not available, then NA



If info not available, then NA

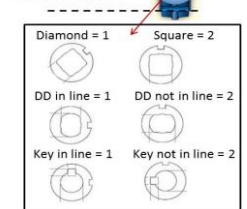


If info not available, then NA



When Valve Is CLOSED Is valve stem:

Butterfly valve as example in pipeline



Disclaimer: Based on information available from valve manufacturer. All dimensions to be verified by customer prior to purchase confirmation.

Valve Size	Required Actuator Range	Actuator Torque (Actual torque, no additional safety factor included)				Individual Part Order Code* (If ordered with the below order codes, Easytork will ship each part as standalone)				2017 List Price	Complete Actuator to Valve Order Code*
		DA @ 60PSI	DA @ 80PSI	FS @ 60PSI	FS @ 80PSI	Actuator	Insert	Extended Shaft	Bracket		
2"	EVA-0411	288	384	187	250	C-A-2-11-1-111	D-212-0.500x0.370in		P-1-F07-F05-0.63in		TI.BF7576.2".0411.16
	EVA-0514	572	763	372	496	C-A-3-11-1-111	D-312-0.500x0.370in				TI.BF7576.2".0514.16
2 1/2"	EVA-0411	288	384	187	250	C-A-2-11-1-111	D-212-0.500x0.370in		P-1-F07-F05-0.63in		TI.BF7576.2 1/2".0411.16
	EVA-0514	572	763	372	496	C-A-3-11-1-111	D-312-0.500x0.370in				TI.BF7576.2 1/2".0514.16
3"	EVA-0411	288	384	187	250	C-A-2-11-1-111	D-212-0.500x0.370in		P-1-F07-F05-0.63in		TI.BF7576.3".0411.16
	EVA-0514	572	763	372	496	C-A-3-11-1-111	D-312-0.500x0.370in				TI.BF7576.3".0514.16
4"	EVA-0514	572	763	372	496	C-A-3-11-1-111	D-312-0.630x0.440in		P-1-F07-F07-0.24in x 3		TI.BF7576.4".0514.16
	EVA-0717	1,144	1,526	744	992	C-A-4-11-1-111	D-412-0.630x0.440in				TI.BF7576.4".0717.16
5"	EVA-0514	572	763	372	496	C-A-3-11-1-111	D-312-0.750x0.500in		P-1-F07-F07-0.24in x 3		TI.BF7576.5".0514.16
	EVA-0717	1,144	1,526	744	992	C-A-4-11-1-111	D-412-0.750x0.500in				TI.BF7576.5".0717.16
6"	EVA-0717	1,144	1,526	744	992	C-A-4-11-1-111	D-412-0.750x0.500in				TI.BF7576.6".0717.16
	EVA-1022	2,289	3,051	1,488	1,983	C-A-5-11-1-111	D-512-0.750x0.500in				TI.BF7576.6".1022.16
8"	EVA-0717	1,144	1,526	744	992	C-A-4-11-1-111	D-412-0.870x0.630in		P-1-F1012-F1012-0.24in x 3		TI.BF7576.8".0717.16
	EVA-1022	2,289	3,051	1,488	1,983	C-A-5-11-1-111	D-512-0.870x0.630in				TI.BF7576.8".1022.16
10"	EVA-1022	2,289	3,051	1,488	1,983	C-A-5-11-1-111	D-513-1.130x0.315x0.315in		P-1-F1012-F1012-0.24in x 2		TI.BF7576.10".1022.16
	EVA-1227	4,577	6,103	2,975	3,967	C-A-6-11-1-111	D-613-1.130x0.315x0.315in				TI.BF7576.10".1227.16
12"	EVA-1227	4,577	6,103	2,975	3,967	C-A-6-11-1-111	D-613-1.250x0.315x0.315in		P-1-F1012-F1012-0.24in x 2		TI.BF7576.12".1227.16
	EVA-1436	9,154	12,205	5,950	7,933	C-A-7-11-1-111	D-713-1.250x0.315x0.315in				TI.BF7576.12".1436.16
14"	EVA-1227	4,577	6,103	2,975	3,967	C-A-6-11-1-111	D-613-1.250x0.315x0.315in		P-1-F1012-F1012-0.24in x 2		TI.BF7576.14".1227.16
	EVA-1436	9,154	12,205	5,950	7,933	C-A-7-11-1-111	D-713-1.250x0.315x0.315in				TI.BF7576.14".1436.16
16"	EVA-1227	4,577	6,103	2,975	3,967	C-A-6-11-1-111	D-613-1.310x0.394x0.394in		TBD	TI.BF7576.16".1227.16	
	EVA-1436	9,154	12,205	5,950	7,933	C-A-7-11-1-111	D-713-1.310x0.394x0.394in			TI.BF7576.16".1436.16	
18"	EVA-1227	4,577	6,103	2,975	3,967	C-A-6-11-1-111	D-613-1.500x0.394x0.394in		TBD	TI.BF7576.18".1227.16	
	EVA-1436	9,154	12,205	5,950	7,933	C-A-7-11-1-111	D-713-1.500x0.394x0.394in			TI.BF7576.18".1436.16	
20"	EVA-1436	9,154	12,205	5,950	7,933	C-A-7-11-1-111	D-713-1.630x0.394x0.394in		TBD	TI.BF7576.20".1436.16	
	#VALUE!	288	763	744	1,983	C-A-0-11-1-111	#VALUE!	#VALUE!	#VALUE!	#VALUE!	

Disclaimer: Based on information available from valve manufacturer. All dimensions to be verified by customer prior to purchase confirmation.

Note*: Only for actuator and hardware required for mounting to valve. Order auxiliary add-ons (e.g., solenoid valve, lockout & PST, limit switch, chemical resistant adder, etc.) separately. If buyer requires assembly of auxiliary add-ons and/or valve, labor will be charged separately.